



Connecting Cultures

*Connecting Together to Build a
Brighter Future*

Fees for Services

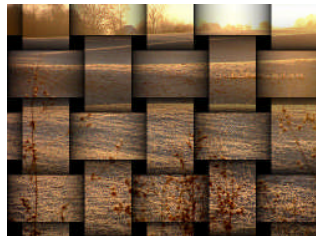
Fee structure:

Trainer per day:	\$1000
Consultation Rate:	\$50/hr
Curriculum/Resource Development:	\$50/hr

Extra Costs include printing of re-
sources, travel, accommodations, meals,
refreshments for training events and
Elder consultations.



Visa and MasterCard Accepted



Connecting Together to
Build a Brighter Future.

Previous Projects

Romy Pritchard the founder, president
and trainer for Connecting Cultures has
helped develop the following projects:

- Metis Wellness Health Fairs and Work-
shops for Vancouver Island Metis
Communities.
- Child at the Centre: BC's First Nation's
Chief Forum on Indigenous Child
Welfare.
- Xchanges: MCFD Youth Employment
Program.
- Aboriginal Mentorship Program: Youth
Addictions Prevention Program for
Vancouver Island Health Authority.
- "Telling It Like It Is" - Aboriginal Youth
Asset Building Video for Vancouver
Island Health Authority.
- The Implementation of the Vancouver
Island Aboriginal Child and Youth
Mental Health Plan - MCFD



Connecting Cultures

3851 Saul St.

Victoria, BC V8X 1S4

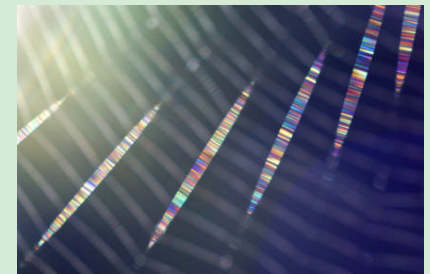
www.healthandsocialdevelopment.com

Phone: 250-920-0373

Fax: 250-920-0370

E-mail: romy.pritchard@ccultures.com

Health and Social Development Training & Project Management



Specializing in Health Promotion
and Wellness with a focus on
Addiction Prevention and
Community Development

Tel: 250-920-0373

www.healthandsocialdevelopment.com



Connecting Cultures provides training and consultation on health promotion and wellness specifically around addictions prevention.

The prevention of addiction decreases the pain and suffering of individuals, families, communities, and employers. Integral to successful prevention activities is knowledge of better practices, skill based training, creating community partnerships, and healthy families.

Connecting Cultures has the skills, expertise, experience, and desire to work with individuals, schools, communities and large agencies to help build successful prevention services.

We can not do this alone; **connecting together** builds support, encouragement, shares success stories, collaborates on resources, and creates dynamic programs and services.

Connecting Cultures will help sustain the change you want.

Services

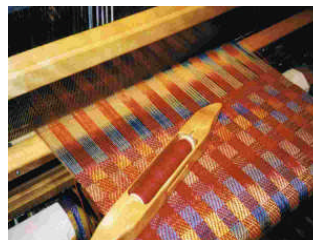
Connecting Cultures Provides the following services:

- Training
- Consultation
- Resource Development

Areas of Service Delivery

Connecting Cultures provides specialty services in the following areas:

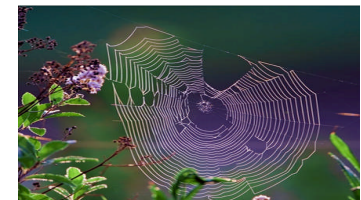
- Diversity Training
- Addiction
- Prevention of Addiction
- Mental Health
- Youth & Family Programming
- Strategic Planning
- Human Resource Management



Connecting Cultures was founded by Romy Pritchard, Red River Metis, Double B.A., Mother and Artist.

Current Programs/ Workshops

- Parenting Teens Conference
- Youth Leadership Program
- “You Belong Here” - Youth Anti-Bullying Program
- Diversity Engagement for Organizations
- The Art of Unleashing Your Potential
- Community Development in Canada
- Overcoming the Obstacles



Connecting Cultures

For more information about registering for courses visit the workshop calendar at www.healthandsocialdevelopment.com

Visa and Master Card Accepted

Phone: 250-920-0373

Fax: 250-920-0370

E-mail: romy.pritchard@ccultures.com